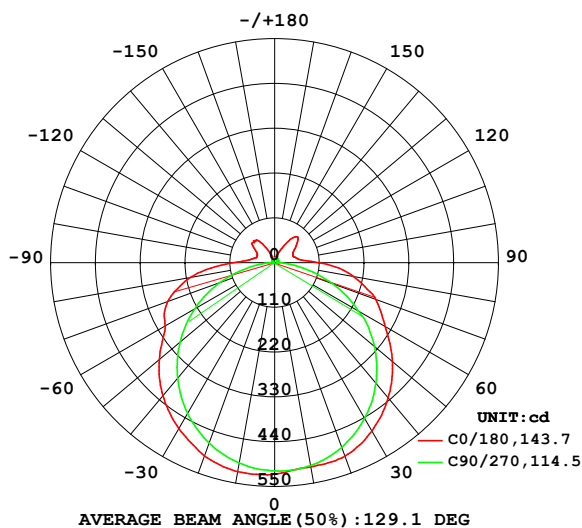


LUMINAIRE PHOTOMETRIC TEST REPORT

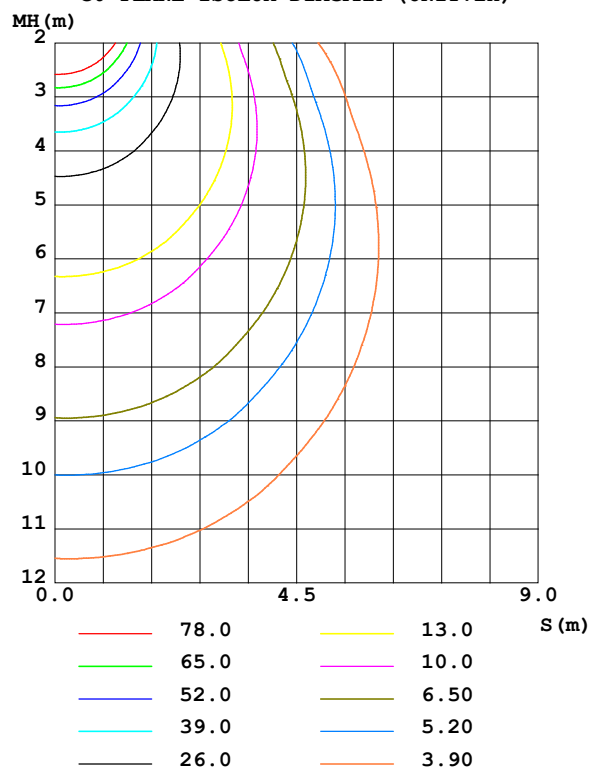
Test:U:112.20V I:0.2580A P:26.300W PF:0.9090 Freq:50.00Hz Lamp Flux:2022.2lx1 lm		
NAME:	TYPE:	WEIGHT:
SPEC.:	DIM.:	SERIAL No.:
MFR.: Everfine	SUR.:	Shielding Angle:

DATA OF LAMP		PHOTOMETRIC DATA				Eff: 76.89 lm/W
MODEL	灯条	I _{max} (cd)	522.2	S/MH(C0/180)	1.36	
NOMINAL POWER(W)	15	LOR(%)	100.0	S/MH(C90/270)	1.28	
RATED VOLTAGE(V)	100	TOTAL FLUX(lm)	2022.2	η UP,DN(C0-180)	5.3,43.8	
NOMINAL FLUX(lm)	2022.21	CIE CLASS	SEMI-D.	η UP,DN(C180-360)	5.8,45.1	
LAMPS INSIDE	1	η up (%)	11.1	CIBSE SHR NOM	1.50	
TEST VOLTAGE(V)	100	η down (%)	88.9	CIBSE SHR MAX	1.55	

LUMINOUS INTENSITY DISTRIBUTION DIAGRAM



C0 PLANE ISOLUX DIAGRAM (UNIT:lx)



C Range: 0 - 360DEG
C Interval: 45.0DEG
Test Speed: HIGH
Temperature:25.3℃
Operators:DAMIN
Test Date:07 January 2026

γ Range: 0 - 180DEG
γ Interval: 1.0DEG
Test System:EVERFINE GO-2000B_V1 SYSTEM V2.00.459
Humidity:65.0%
Test Distance:8.186m [K=1.0000]
Remarks:

ZONAL FLUX DIAGRAM

ZONAL FLUX DIAGRAM:

γ	C0	C45	C90	C135	C180	C225	C270	C315	γ	Φ zone	Φ total	%lum, lamp
10	521.1	513.1	499.8	508.0	509.1	510.5	506.3	513.5	0- 10	48.85	48.85	2.42,2.42
20	505.2	495.4	471.5	493.0	505.6	499.3	482.6	499.2	10- 20	142.5	191.3	9.46,9.46
30	470.9	461.7	427.5	460.4	477.8	470.9	442.1	467.7	20- 30	220.9	412.2	20.4,20.4
40	427.1	410.1	370.7	411.2	433.5	424.0	386.6	419.7	30- 40	273.3	685.5	33.9,33.9
50	369.9	351.7	303.2	349.4	378.1	363.9	320.1	361.9	40- 50	294.5	980.0	48.5,48.5
60	310.7	278.7	226.4	278.8	313.6	292.6	237.6	290.9	50- 60	281.7	1262	62.4,62.4
70	279.8	208.5	142.3	203.1	264.3	220.6	150.7	223.5	60- 70	242.4	1504	74.4,74.4
80	210.0	137.8	57.11	132.4	196.4	148.3	63.77	152.8	70- 80	185.3	1689	83.5,83.5
90	101.2	67.59	5.682	67.66	107.7	76.64	10.62	74.44	80- 90	109.0	1798	88.9,88.9
100	56.06	44.26	5.470	45.13	57.90	48.34	6.497	49.24	90-100	51.95	1850	91.5,91.5
110	46.36	36.14	6.328	39.56	48.43	41.63	7.368	40.78	100-110	37.50	1888	93.4,93.4
120	51.17	24.97	7.336	42.73	53.41	44.34	8.359	34.83	110-120	32.55	1920	95,95
130	73.13	33.42	8.304	53.33	71.63	55.13	9.304	37.30	120-130	34.40	1955	96.7,96.7
140	71.80	26.20	9.365	44.43	83.82	46.47	10.04	27.46	130-140	32.96	1988	98.3,98.3
150	42.66	19.36	10.33	25.72	51.68	26.29	10.98	12.81	140-150	20.79	2009	99.3,99.3
160	13.85	11.31	11.24	16.32	22.40	16.53	11.61	11.82	150-160	8.788	2017	99.8,99.8
170	11.70	11.84	12.17	12.24	12.08	12.00	12.02	11.95	160-170	3.691	2021	99.9,99.9
180	12.02	12.42	12.49	12.31	12.05	12.41	12.50	12.31	170-180	1.150	2022	100,100
DEG	LUMINOUS INTENSITY:cd									UNIT:lm		

Conical surface Flux(90deg): 832.14 lm

%lum = 41.1%

%lamp = 41.1%

Conical surface Flux(120deg): 1261.7 lm

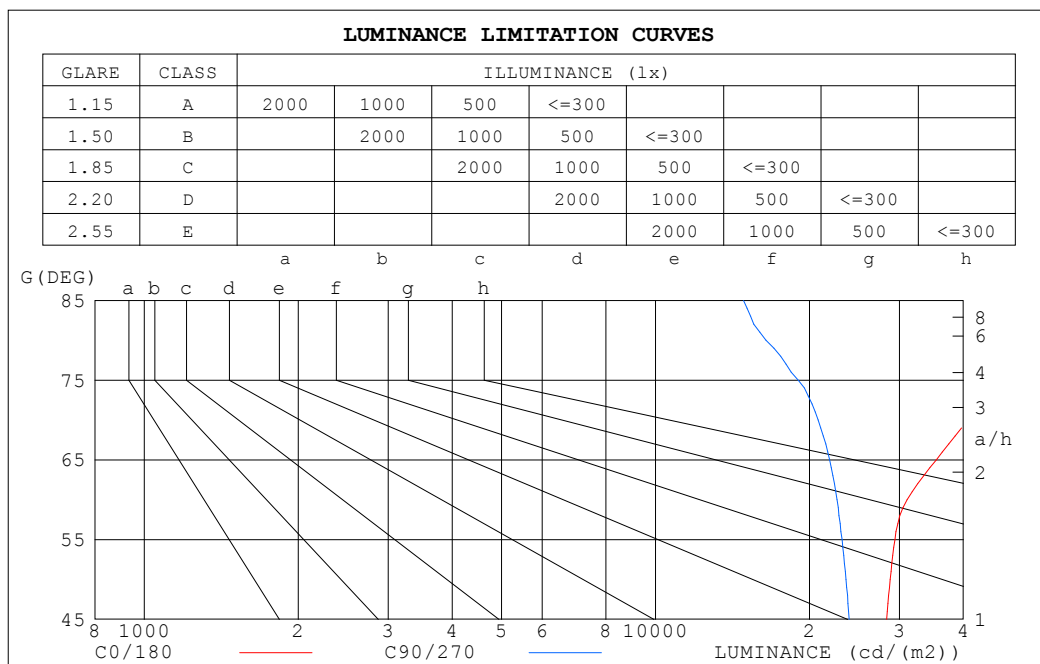
%lum = 62.4%

%lamp = 62.4%

C Range: 0 - 360DEG
 C Interval: 45.0DEG
 Test Speed: HIGH
 Temperature:25.3°C
 Operators:DAMIN
 Test Date:07 January 2026

γ Range: 0 - 180DEG
 γ Interval: 1.0DEG
 Test System:EVERFINE GO-2000B_V1 SYSTEM V2.00.459
 Humidity:65.0%
 Test Distance:8.186m [K=1.0000]
 Remarks:

LUMINANCE LIMITATION CURVES



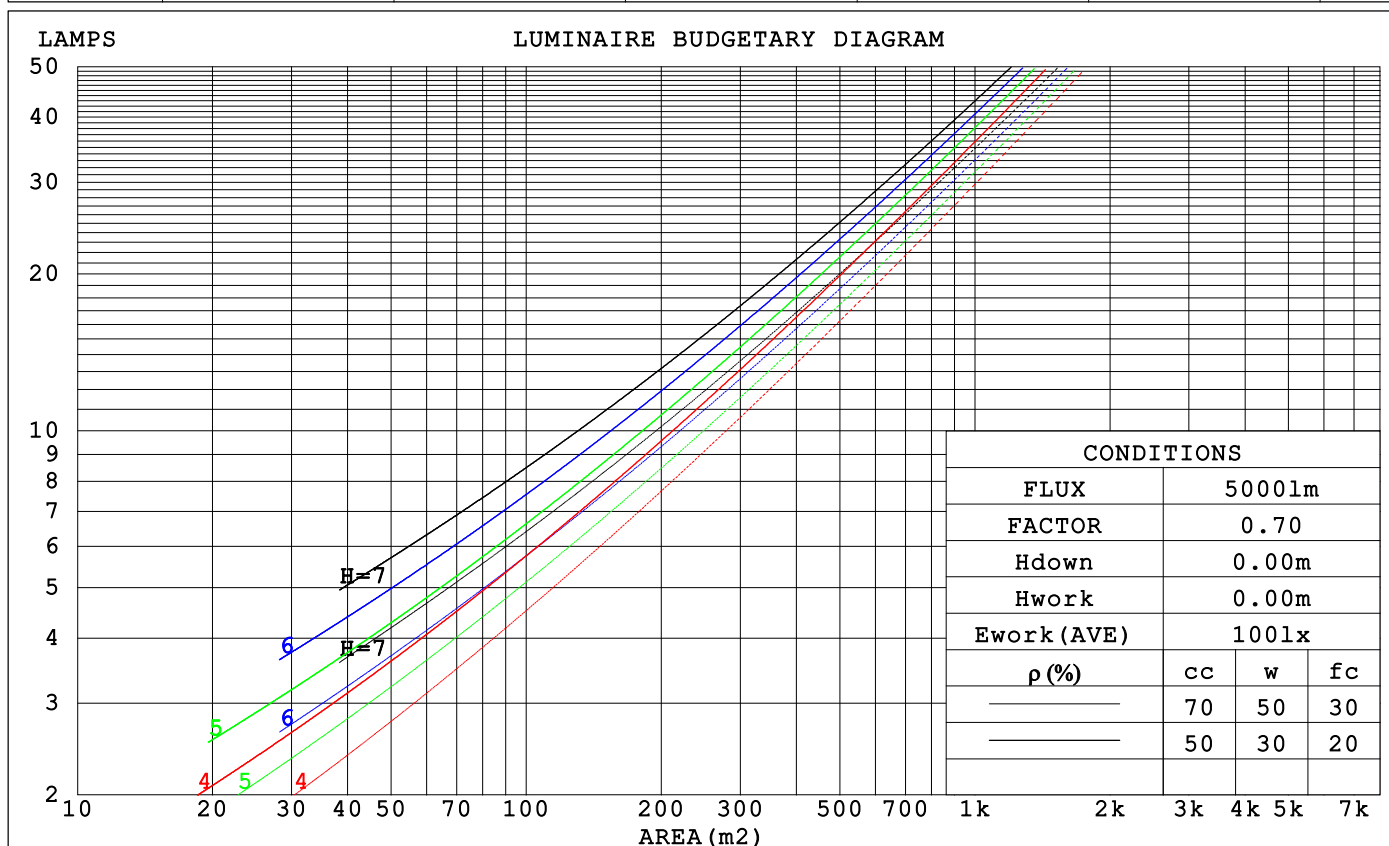
LUMINANCE cd/(m2)		
G (DEG)	C0/180	C90/270
85	90281	14865
80	60460	16443
75	47738	19025
70	40903	20805
65	35409	21921
60	31073	22637
55	29381	23173
50	28772	23583
45	28323	23920

C Range: 0 - 360DEG
C Interval: 45.0DEG
Test Speed: HIGH
Temperature: 25.3°C
Operators: DAMIN
Test Date: 07 January 2026

γ Range: 0 - 180DEG
γ Interval: 1.0DEG
Test System: EVERFINE GO-2000B_V1 SYSTEM V2.00.459
Humidity: 65.0%
Test Distance: 8.186m [K=1.0000]
Remarks:

CU AND LUMINAIRE BUDGETARY ESTIMATE DIAGRAM

pcc	80%			70%			50%			30%			10%			0
pw	50%	30%	10%	50%	30%	10%	50%	30%	10%	50%	30%	10%	50%	30%	10%	0
pfc	20%			20%			20%			20%			20%			0
RCR	RCR:Room Cavity Ratio			Coefficients of Utilization(CU)												
0.0	1.16	1.16	1.16	1.12	1.12	1.12	1.05	1.05	1.05	.98	.98	.98	.92	.92	.92	.89
1.0	.99	.94	.89	.95	.91	.86	.89	.85	.82	.83	.80	.77	.78	.75	.73	.70
2.0	.85	.77	.71	.82	.75	.69	.76	.71	.66	.71	.67	.63	.67	.63	.60	.57
3.0	.74	.65	.58	.71	.63	.57	.67	.60	.54	.62	.57	.52	.58	.54	.50	.47
4.0	.65	.55	.48	.63	.54	.47	.59	.51	.46	.55	.49	.44	.52	.46	.42	.39
5.0	.58	.48	.41	.56	.47	.40	.52	.45	.39	.49	.43	.38	.46	.41	.36	.34
6.0	.52	.42	.36	.50	.41	.35	.47	.40	.34	.44	.38	.33	.42	.36	.32	.29
7.0	.47	.38	.31	.45	.37	.31	.43	.35	.30	.40	.34	.29	.38	.32	.28	.26
8.0	.42	.34	.28	.41	.33	.27	.39	.32	.26	.37	.30	.26	.35	.29	.25	.23
9.0	.39	.30	.25	.38	.30	.24	.36	.29	.24	.34	.28	.23	.32	.26	.22	.20
10.0	.36	.28	.22	.35	.27	.22	.33	.26	.21	.31	.25	.21	.30	.24	.20	.18



C Range: 0 - 360DEG
C Interval: 45.0DEG
Test Speed: HIGH
Temperature:25.3°C
Operators:DAMIN
Test Date:07 January 2026

γ Range: 0 - 180DEG
γ Interval: 1.0DEG
Test System:EVERFINE GO-2000B_V1 SYSTEM V2.00.459
Humidity:65.0%
Test Distance:8.186m [K=1.0000]
Remarks:

WEC AND CCEC

ρ_{cc}	80%			70%			50%			30%			10%			0	
ρ_w	50%	30%	10%	50%	30%	10%	50%	30%	10%	50%	30%	10%	50%	30%	10%	0	
ρ_{fc}	20%			20%			20%			20%			20%			0	
RCR	RCR:Room Cavity Ratio						Wall Exitance Coefficients (WEC)										
0.0																	
1.0	.361	.205	.065	.351	.200	.064	.331	.190	.061	.313	.180	.058	.296	.171	.055		
2.0	.321	.176	.054	.312	.172	.053	.294	.164	.051	.278	.156	.049	.263	.149	.047		
3.0	.289	.154	.046	.281	.150	.045	.265	.143	.044	.250	.137	.042	.236	.131	.040		
4.0	.262	.136	.040	.255	.133	.039	.240	.127	.038	.227	.122	.037	.214	.117	.035		
5.0	.240	.122	.035	.233	.120	.035	.220	.114	.034	.208	.110	.033	.196	.105	.032		
6.0	.220	.111	.032	.214	.108	.031	.202	.104	.030	.191	.099	.029	.181	.095	.028		
7.0	.204	.101	.029	.198	.099	.028	.187	.095	.027	.177	.091	.026	.168	.087	.026		
8.0	.189	.093	.026	.184	.091	.026	.175	.087	.025	.165	.084	.024	.157	.080	.023		
9.0	.177	.086	.024	.172	.084	.024	.163	.081	.023	.155	.078	.022	.147	.075	.022		
10.0	.166	.079	.022	.161	.078	.022	.153	.075	.021	.145	.072	.021	.138	.069	.020		

ρ_{cc}	80%			70%			50%			30%			10%			0	
ρ_w	50%	30%	10%	50%	30%	10%	50%	30%	10%	50%	30%	10%	50%	30%	10%	0	
ρ_{fc}	20%			20%			20%			20%			20%			0	
RCR	RCR:Room Cavity Ratio						Ceiling Cavity Exitance Coefficients (CCEC)										
0.0	.275	.275	.275	.235	.235	.235	.160	.160	.160	.092	.092	.092	.029	.029	.029		
1.0	.269	.241	.215	.230	.207	.185	.157	.142	.128	.091	.082	.075	.029	.026	.024		
2.0	.262	.217	.180	.224	.187	.156	.154	.129	.109	.089	.075	.064	.028	.024	.021		
3.0	.254	.200	.158	.218	.173	.137	.150	.120	.096	.086	.070	.056	.028	.023	.019		
4.0	.247	.188	.143	.212	.162	.124	.145	.113	.087	.084	.066	.052	.027	.022	.017		
5.0	.239	.178	.132	.205	.154	.115	.141	.107	.081	.082	.063	.048	.026	.021	.016		
6.0	.232	.170	.125	.199	.147	.109	.137	.103	.077	.080	.060	.046	.026	.020	.015		
7.0	.225	.163	.120	.193	.141	.104	.133	.099	.074	.078	.058	.044	.025	.019	.015		
8.0	.218	.157	.116	.188	.136	.101	.130	.096	.071	.075	.056	.043	.024	.019	.014		
9.0	.212	.152	.112	.182	.132	.098	.126	.093	.070	.074	.055	.042	.024	.018	.014		
10.0	.206	.148	.110	.177	.129	.096	.123	.091	.068	.072	.054	.041	.023	.018	.013		

C Range: 0 - 360DEG
 C Interval: 45.0DEG
 Test Speed: HIGH
 Temperature: 25.3°C
 Operators: DAMIN
 Test Date: 07 January 2026

γ Range: 0 - 180DEG
 γ Interval: 1.0DEG
 Test System: EVERFINE GO-2000B_V1 SYSTEM V2.00.459
 Humidity: 65.0%
 Test Distance: 8.186m [K=1.0000]
 Remarks:

UGR(Unified Glare Rating) Table

ceiling/cavity		0.7	0.7	0.5	0.5	0.3	0.7	0.7	0.5	0.5	0.3
walls		0.5	0.3	0.5	0.3	0.3	0.5	0.3	0.5	0.3	0.3
working plane		0.2	0.2	0.2	0.2	0.2	0.2	0.2	0.2	0.2	0.2
Room dimensions		Viewed crosswise					Viewed endwise				
x = 2H y = 2H	2H	24.1	25.6	24.6	26.0	26.4	23.0	24.5	23.4	24.9	25.3
	3H	26.7	28.0	27.1	28.4	28.9	24.6	25.9	25.0	26.3	26.8
	4H	28.0	29.3	28.5	29.8	30.2	25.2	26.5	25.7	26.9	27.4
	6H	29.4	30.6	29.9	31.1	31.6	25.6	26.8	26.1	27.3	27.8
	8H	30.1	31.3	30.6	31.8	32.3	25.8	26.9	26.3	27.4	27.9
	12H	30.9	32.0	31.4	32.5	33.0	25.8	27.0	26.4	27.4	28.0
4H	2H	24.7	26.0	25.2	26.4	26.9	23.9	25.1	24.4	25.6	26.1
	3H	27.5	28.6	28.0	29.1	29.6	25.7	26.8	26.2	27.3	27.8
	4H	29.0	30.0	29.5	30.5	31.1	26.5	27.5	27.1	28.1	28.6
	6H	30.5	31.5	31.1	32.0	32.6	27.1	28.0	27.7	28.6	29.2
	8H	31.4	32.2	31.9	32.8	33.4	27.3	28.2	27.9	28.7	29.4
	12H	32.2	33.0	32.8	33.6	34.2	27.5	28.3	28.1	28.8	29.5
8H	4H	29.3	30.1	29.8	30.7	31.3	27.2	28.1	27.8	28.6	29.3
	6H	31.1	31.8	31.7	32.4	33.0	28.1	28.8	28.7	29.4	30.1
	8H	32.1	32.7	32.7	33.3	34.0	28.5	29.1	29.1	29.8	30.4
	12H	33.1	33.7	33.8	34.3	35.0	28.8	29.4	29.5	30.0	30.7
12H	4H	29.3	30.1	29.9	30.6	31.3	27.4	28.2	28.0	28.8	29.4
	6H	31.2	31.8	31.8	32.4	33.1	28.5	29.1	29.1	29.7	30.4
	8H	32.2	32.8	32.9	33.4	34.1	29.0	29.5	29.6	30.2	30.9
Variations with the observer position at spacings(CIE Pub.117):											
S = 1.0H		+ 0.1 / - 0.1					+ 0.1 / - 0.2				
1.5H		+ 0.2 / - 0.2					+ 0.2 / - 0.3				
2.0H		+ 0.2 / - 0.2					+ 0.2 / - 0.4				

CIE Pub.117, 2022 lm Total Lamp Luminous Flux Corrected ($8\log(F/F_0) = 2.4$)
Area: 0.02 m²

C Range: 0 - 360DEG
C Interval: 45.0DEG
Test Speed: HIGH
Temperature:25.3℃
Operators:DAMIN
Test Date:07 January 2026

γ Range: 0 - 180DEG
 γ Interval: 1.0DEG
Test System:EVERFINE GO-2000B_V1 SYSTEM V2.00.459
Humidity:65.0%
Test Distance:8.186m [K=1.0000]
Remarks:

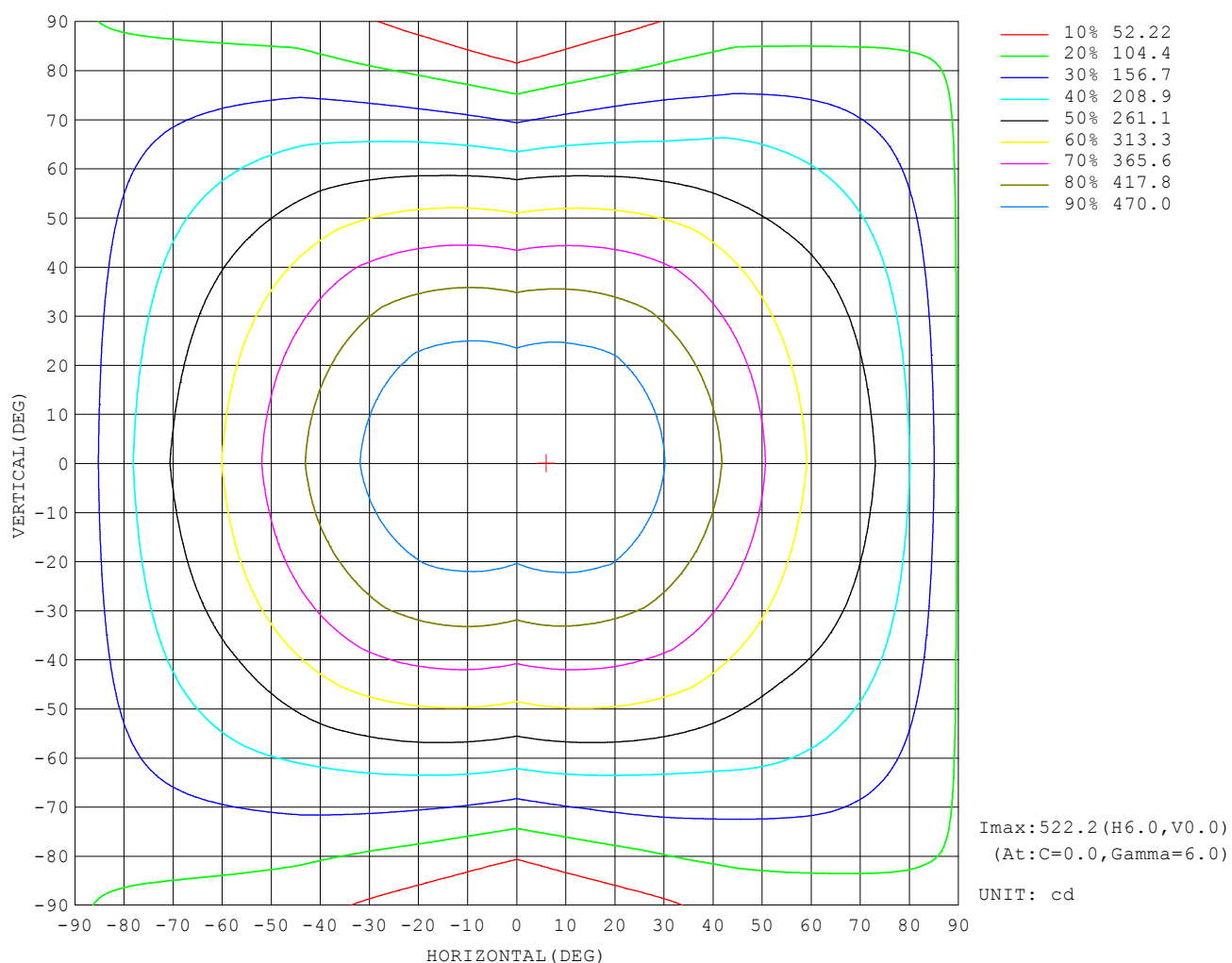
UTILIZATION FACTORS TABLE

REFLECTANCE										
Ceiling	0.8	0.8	0.8	0.7	0.7	0.7	0.5	0.5	0.5	0
Walls	0.7	0.5	0.3	0.7	0.5	0.3	0.7	0.5	0.3	0
Working plane	0.2	0.2	0.2	0.2	0.2	0.2	0.2	0.2	0.2	0
ROOM INDEX	UTILIZATION FACTORS (PERCENT) $k(RI) \times RCR = 5$									
$k = 0.60$	51	39	32	50	39	32	48	38	31	24
0.80	61	48	40	59	47	40	57	46	39	32
1.00	69	56	48	67	55	48	64	56	47	38
1.25	76	64	56	74	63	55	70	60	54	45
1.50	81	69	61	78	68	61	74	65	59	49
2.00	88	78	70	85	76	69	80	73	67	56
2.50	92	83	76	89	81	74	84	77	71	60
3.00	96	87	81	93	85	79	87	81	76	64
4.00	100	93	87	97	91	85	91	86	81	69
5.00	103	97	92	100	94	90	93	89	85	72
ROOM INDEX	UF (total)									Direct
According to DIN EN 13032-2 2004			Suspended					SHRNOM = 1.25		

C Range: 0 - 360DEG
 C Interval: 45.0DEG
 Test Speed: HIGH
 Temperature: 25.3°C
 Operators: DAMIN
 Test Date: 07 January 2026

γ Range: 0 - 180DEG
 γ Interval: 1.0DEG
 Test System: EVERFINE GO-2000B_V1 SYSTEM V2.00.459
 Humidity: 65.0%
 Test Distance: 8.186m [K=1.0000]
 Remarks:

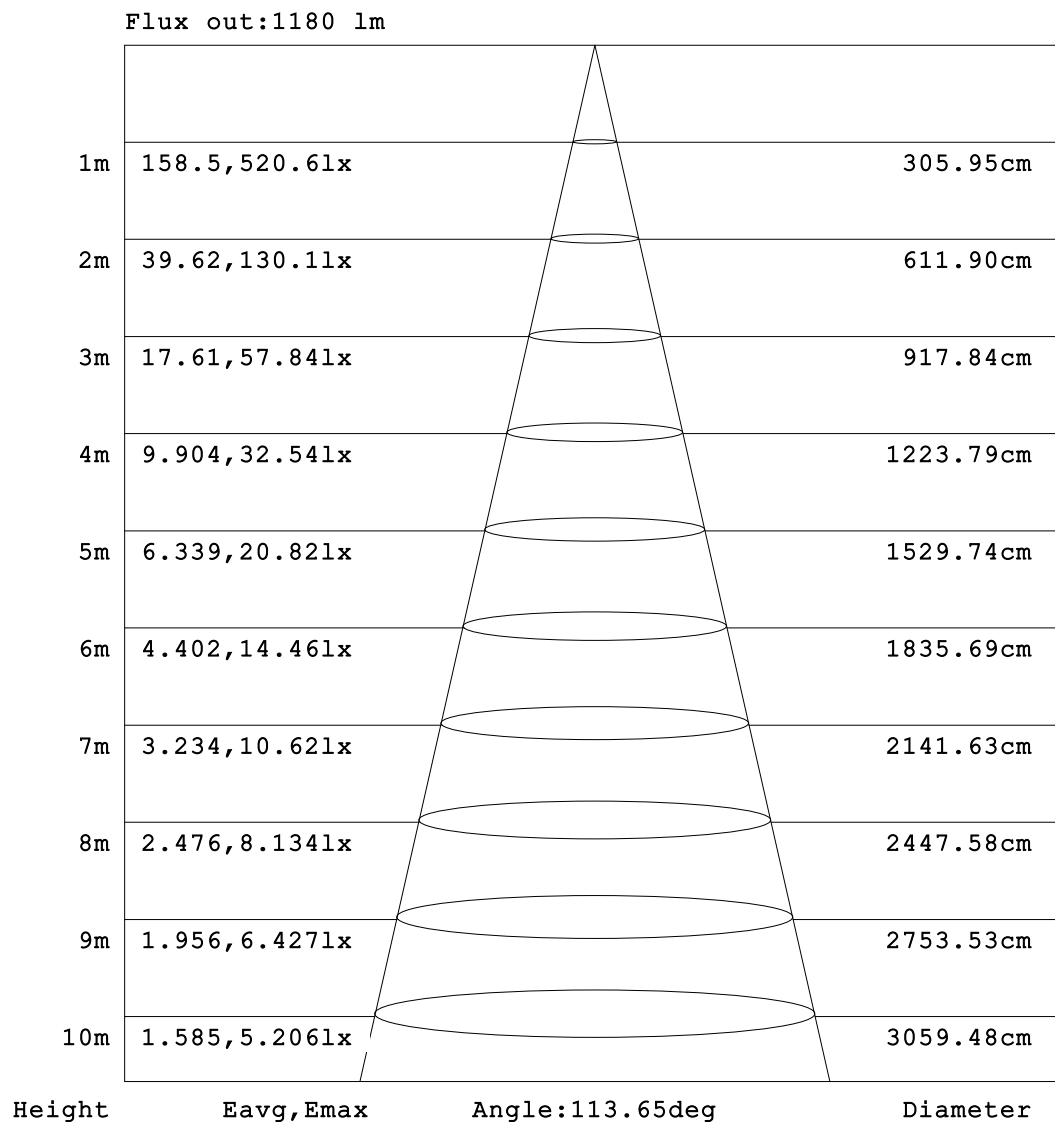
ISOCANDELA DIAGRAM



C Range: 0 - 360DEG
C Interval: 45.0DEG
Test Speed: HIGH
Temperature: 25.3°C
Operators: DAMIN
Test Date: 07 January 2026

γ Range: 0 - 180DEG
γ Interval: 1.0DEG
Test System: EVERFINE GO-2000B_V1 SYSTEM V2.00.459
Humidity: 65.0%
Test Distance: 8.186m [K=1.0000]
Remarks:

AAI Figure

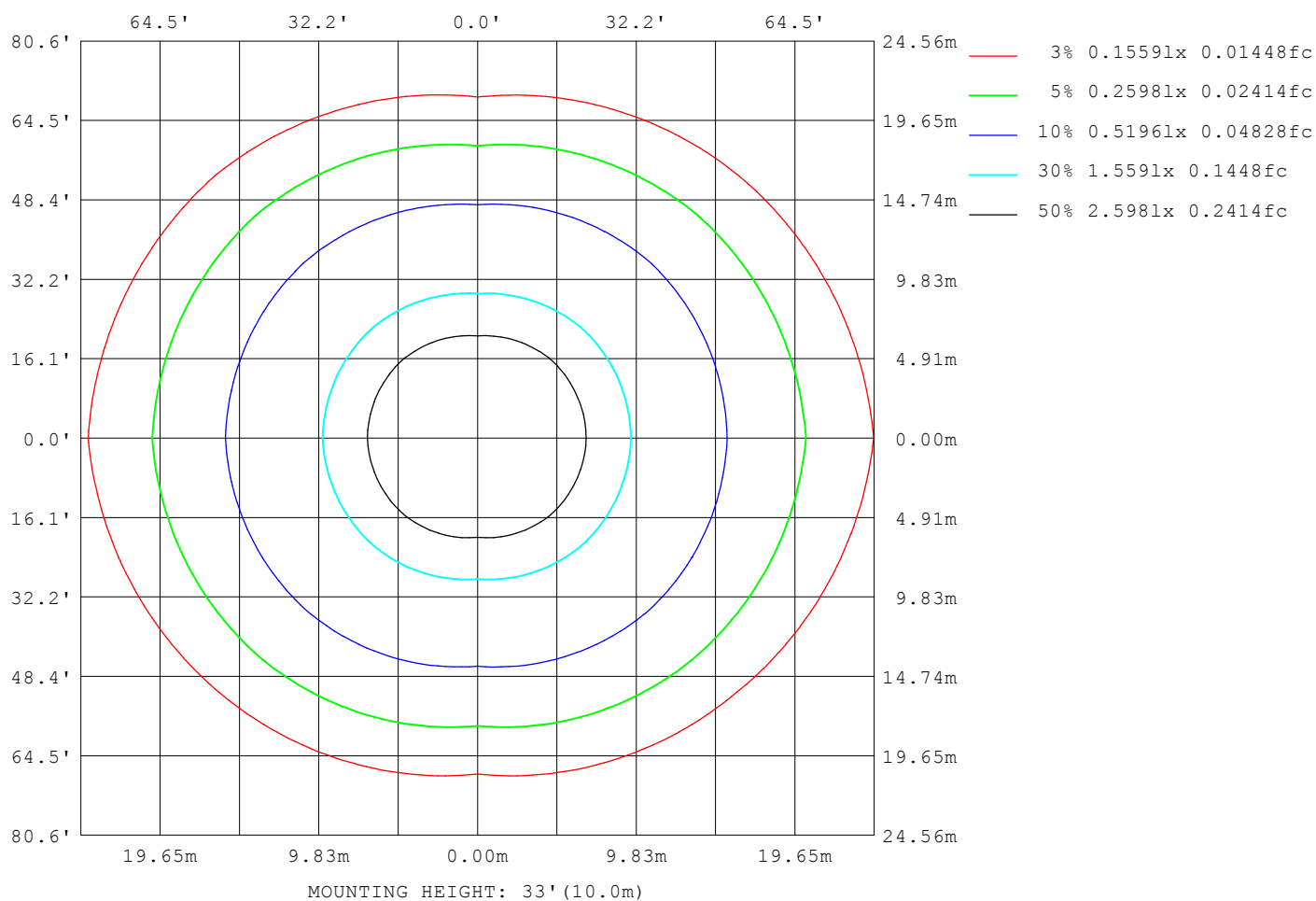


Note:The Curves indicate the illuminated area and the average illumination when the luminaire is at different distance.

C Range: 0 - 360DEG
 C Interval: 45.0DEG
 Test Speed: HIGH
 Temperature:25.3°C
 Operators:DAMIN
 Test Date:07 January 2026

γ Range: 0 - 180DEG
 γ Interval: 1.0DEG
 Test System:EVERFINE GO-2000B_V1 SYSTEM V2.00.459
 Humidity:65.0%
 Test Distance:8.186m [K=1.0000]
 Remarks:

ISOLUX DIAGRAM



C Range: 0 - 360DEG
 C Interval: 45.0DEG
 Test Speed: HIGH
 Temperature: 25.3°C
 Operators: DAMIN
 Test Date: 07 January 2026

γ Range: 0 - 180DEG
 γ Interval: 1.0DEG
 Test System: EVERFINE GO-2000B_V1 SYSTEM V2.00.459
 Humidity: 65.0%
 Test Distance: 8.186m [K=1.0000]
 Remarks:

LED Avg.L Report

Test:U:112.20V I:0.2580A P:26.300W PF:0.9090 Freq:50.00Hz Lamp Flux:2022.21x1 lm		
NAME:	TYPE:	WEIGHT:
SPEC.:	DIM.:	SERIAL No.:
MFR.: Everfine	SUR.:	Shielding Angle:

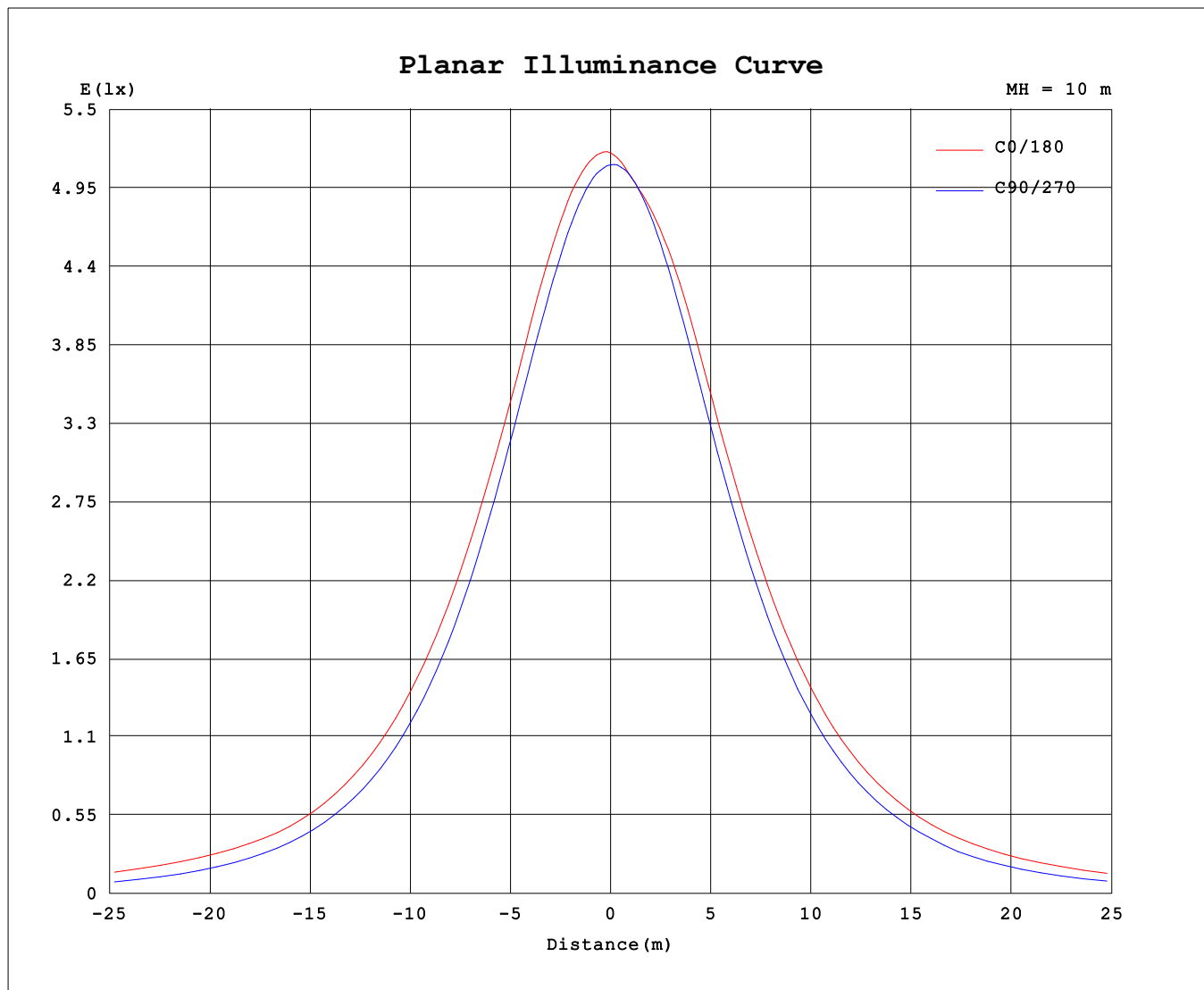
AvgL	cd/m2
L_0~180 (65) av	34744
L_0~180 (75) av	46095
L_0~180 (85) av	90689
L_90~270 (65) av	22505
L_90~270 (75) av	19726
L_90~270 (85) av	15822
L_45 (65) av	29088
L_45 (75) av	35109
L_45 (85) av	61700

Standard: GB/T 29293-2012

C Range: 0 - 360DEG
 C Interval: 45.0DEG
 Test Speed: HIGH
 Temperature:25.3℃
 Operators:DAMIN
 Test Date:07 January 2026

γ Range: 0 - 180DEG
 γ Interval: 1.0DEG
 Test System:EVERFINE GO-2000B_V1 SYSTEM V2.00.459
 Humidity:65.0%
 Test Distance:8.186m [K=1.0000]
 Remarks:

Planar Illuminance Curve



C Range: 0 - 360DEG
 C Interval: 45.0DEG
 Test Speed: HIGH
 Temperature: 25.3°C
 Operators: DAMIN
 Test Date: 07 January 2026

γ Range: 0 - 180DEG
 γ Interval: 1.0DEG
 Test System: EVERFINE GO-2000B_V1 SYSTEM V2.00.459
 Humidity: 65.0%
 Test Distance: 8.186m [K=1.0000]
 Remarks:

LUMINOUS DISTRIBUTION INTENSITY DATA

Table--1

UNIT: cd

C (DEG) γ (DEG)	0	45	90	135	180	225	270	315										
0	520	512	511	510	520	512	511	510										
5	522	516	508	509	512	510	511	513										
10	521	513	500	508	509	510	506	513										
15	515	507	487	503	509	507	497	508										
20	505	495	472	493	506	499	483	499										
25	488	480	451	479	494	488	464	486										
30	471	462	428	460	478	471	442	468										
35	451	436	401	438	458	449	417	444										
40	427	410	371	411	434	424	387	420										
45	401	383	338	382	407	395	355	393										
50	370	352	303	349	378	364	320	362										
55	337	316	266	315	346	330	283	328										
60	311	279	226	279	314	293	238	291										
65	299	237	185	237	288	256	195	253										
70	280	208	142	203	264	221	151	223										
75	247	177	98.5	170	230	186	106	194										
80	210	138	57.1	132	196	148	63.8	153										
85	157	102	25.9	100	159	113	29.3	115										
90	101	67.6	5.68	67.7	108	76.6	10.6	74.4										
95	67.8	51.3	5.16	50.1	71.9	55.6	6.20	56.0										
100	56.1	44.3	5.47	45.1	57.9	48.3	6.50	49.2										
105	48.0	39.0	5.83	41.0	52.1	43.6	6.92	42.0										
110	46.4	36.1	6.33	39.6	48.4	41.6	7.37	40.8										
115	47.5	29.3	6.83	40.1	49.5	42.0	7.88	36.3										
120	51.2	25.0	7.34	42.7	53.4	44.3	8.36	34.8										
125	62.2	33.2	7.83	48.2	61.5	50.2	8.86	38.2										
130	73.1	33.4	8.30	53.3	71.6	55.1	9.30	37.3										
135	70.9	29.1	8.83	53.2	81.6	55.3	9.65	34.7										
140	71.8	26.2	9.37	44.4	83.8	46.5	10.0	27.5										
145	61.7	22.5	9.86	33.3	72.3	35.0	10.4	17.8										
150	42.7	19.4	10.3	25.7	51.7	26.3	11.0	12.8										
155	22.1	14.6	10.8	20.1	34.2	20.2	11.3	11.6										
160	13.9	11.3	11.2	16.3	22.4	16.5	11.6	11.8										
165	11.4	11.6	11.8	12.6	17.0	13.1	11.8	11.9										
170	11.7	11.8	12.2	12.2	12.1	12.0	12.0	11.9										
175	11.9	12.3	12.4	12.3	11.7	12.0	12.1	12.0										
180	12.0	12.4	12.5	12.3	12.0	12.4	12.5	12.3										

C Range: 0 - 360DEG

C Interval: 45.0DEG

Test Speed: HIGH

Temperature:25.3℃

Operators:DAMIN

Test Date:07 January 2026

γ Range: 0 - 180DEG

γ Interval: 1.0DEG

Test System:EVERFINE GO-2000B_V1 SYSTEM V2.00.459

Humidity:65.0%

Test Distance:8.186m [K=1.0000]

Remarks: